

2023 Conservation Progress Report



Producer-Led Watershed Protection Grant Program

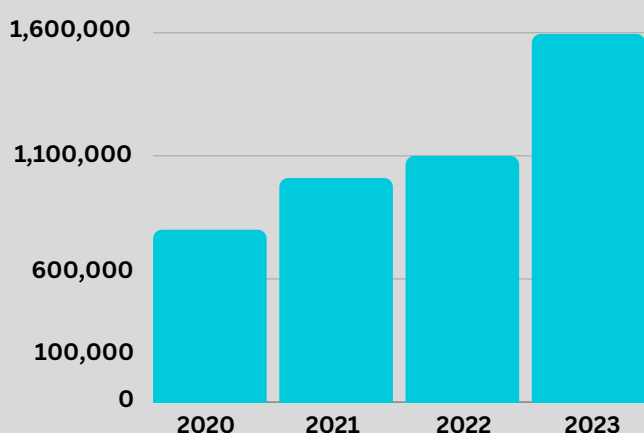
PARTICIPATION CONTINUES TO GROW



In 2023, there were **43 producer-led groups** funded by the program, encompassing **2,016 members** and **782,674 acres of managed farmland**, compared to 1,893 members and 643,829 acres in 2022.

CONSERVATION PRACTICES INCREASE BY 43% FROM 2022

In 2023, conservation practices implemented by producer-led groups **grew to over 1.58 million acres.**



KEEPING SOIL AND NUTRIENTS IN PLACE

15% increase in no-till practices



Minimizing disturbance to the soil to help prevent erosion from wind and water.

29% increase in nutrient management



Applying nutrients at the right rate, time, and place so they don't run off into waterways.

2% increase in cover crops



Keeping the ground covered to hold soil in place and feed soil microbes.

ENVIRONMENTAL IMPACT

The 129,936 acres of cover crops planted and 130,338 acres of land under no-till management in 2023 potentially reduced an *estimated** :

Did you know?

This is comparable to 17,738 gas powered passenger vehicles driven for one year.

79,823 tons of carbon dioxide equivalents of soil-based greenhouse gas emissions

213,561 tons of soil erosion occurring on farm fields

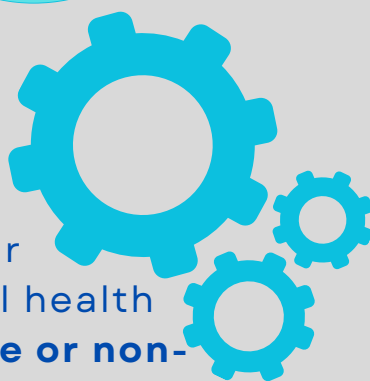
143,068 pounds of phosphorus from leaving farm fields

Did you know?

One pound of P that reaches a waterbody can feed up to 500 pounds of algae and one dumptruck load can carry as much as 10 tons of soil.

SOIL HEALTH SYSTEMS

Farmers in producer-led groups are integrating multiple practices onto their farms as part of a larger soil health system, including **innovative or non-traditional soil health practices.**



In 2023, producer-led groups implemented nearly **552,510 acres** of these “other soil health practices”, which include **targeted nitrogen management, managed grazing, and other perennial vegetation practices.**

This report was developed by the Wisconsin Department of Agriculture, Trade and Consumer Protection.

* All estimates are provided from models. Actual reductions in pollutants may be higher or lower.

Contact:

Randall.Zogbaum@wi.gov

July 2024